

TM 620 A75



Van der Graaf Scandinavia

POWER TRANSMISSION EQUIPMENT

Van der Graaf Scandinavia AB • Box 54, Spinngatan 2 • 260 50 Billesholm
Tfn 042-22 08 02 • Fax 042-22 08 03
www.vandergraaf.se • info@vandergraaf.se

TM 620A75

Type TM 500A75	Power kW	Beltspeed m/s at 50 Hz				Min. L mm	Full load Curr. 400 V - 50 Hz I =A	Weight kg L=850
		Beltpull N						
430 Z	22	3,9	3,1	2,5	2	850	37	700
		5360	6740	8360	10450			
425 Z	18,5	3,9	3,1	2,5	2	850	32	690
		4505	5670	7030	8790			
620 Z	15	2,6	2,1	1,6	1,25	850	31,5	700
		5480	6785	8905	11400			
815 Z	11	2	1,5	1,25	1	850	26	700
		5225	6965	8360	10450			

Available standard facewidth's **850 - 900 - 950 - 1000 - 1050 - 1100 - 1150 - 1400 - 1600 mm**

The total weight of a drummotor grows approx. 38,7 kg per 100 mm.

Other beltspeeds and facewidth's upon request.

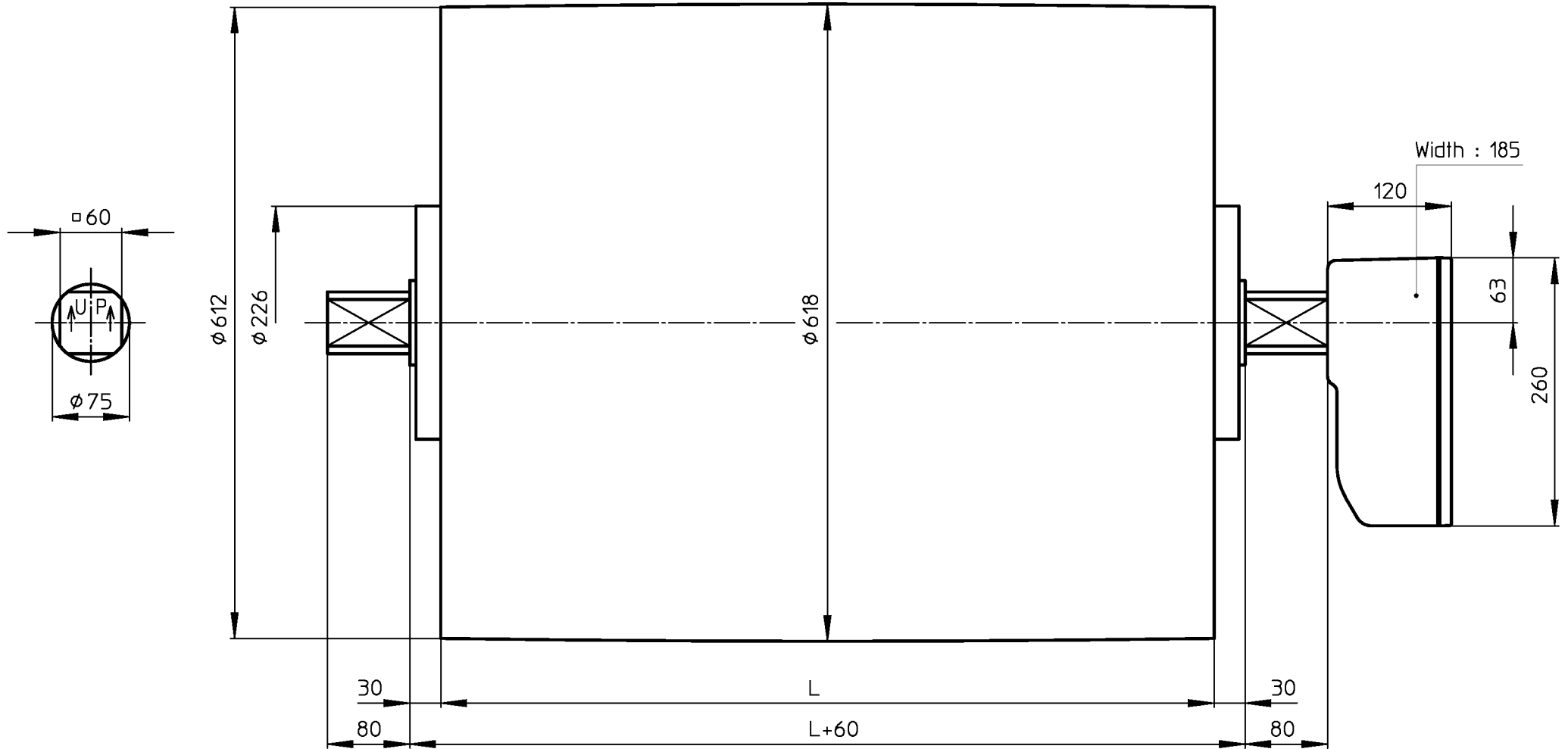
All these drummotors are also available in Stainless Steel - 316

Available torque $\frac{\text{Beltpull N} \times \text{Drum diameter m}}{2}$ (Nm)

2

TM620A75

Design A



MS_TM620A75_KKGG

12-07-2001



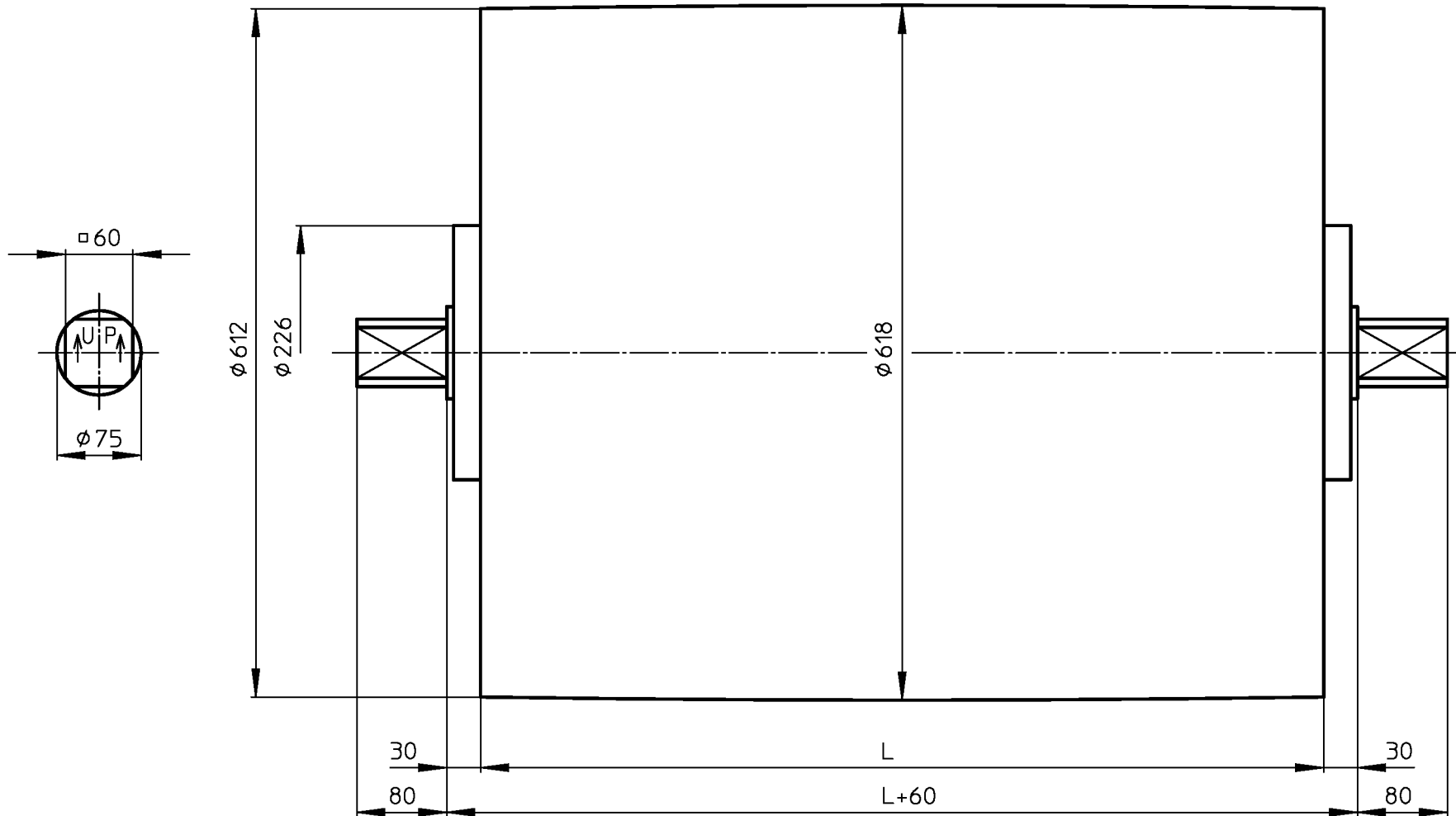
VAN DER GRAAF B.V.

VOLLENHOVE-HOLLAND

Telephone :+31(0)527-241441
Telefax :+31(0)527-241488

KT620A75

Design A



MS_KT620A75

28-10-2002

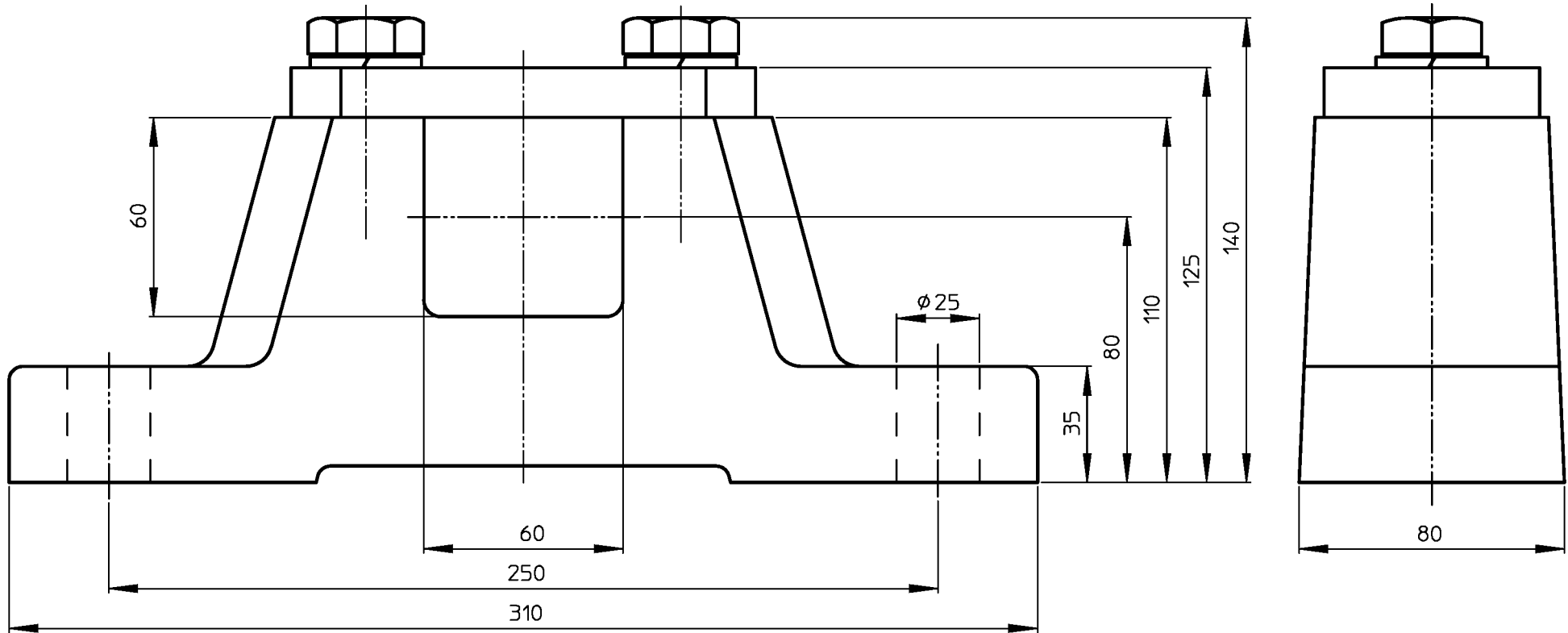


VAN DER GRAAF B.V.

VOLLENHOVE-HOLLAND

Telephone :+31(0)527-241441
Telefax :+31(0)527-241488

ASBLOK/BRACKET/LAGERBOCK AB75



MS_AB75

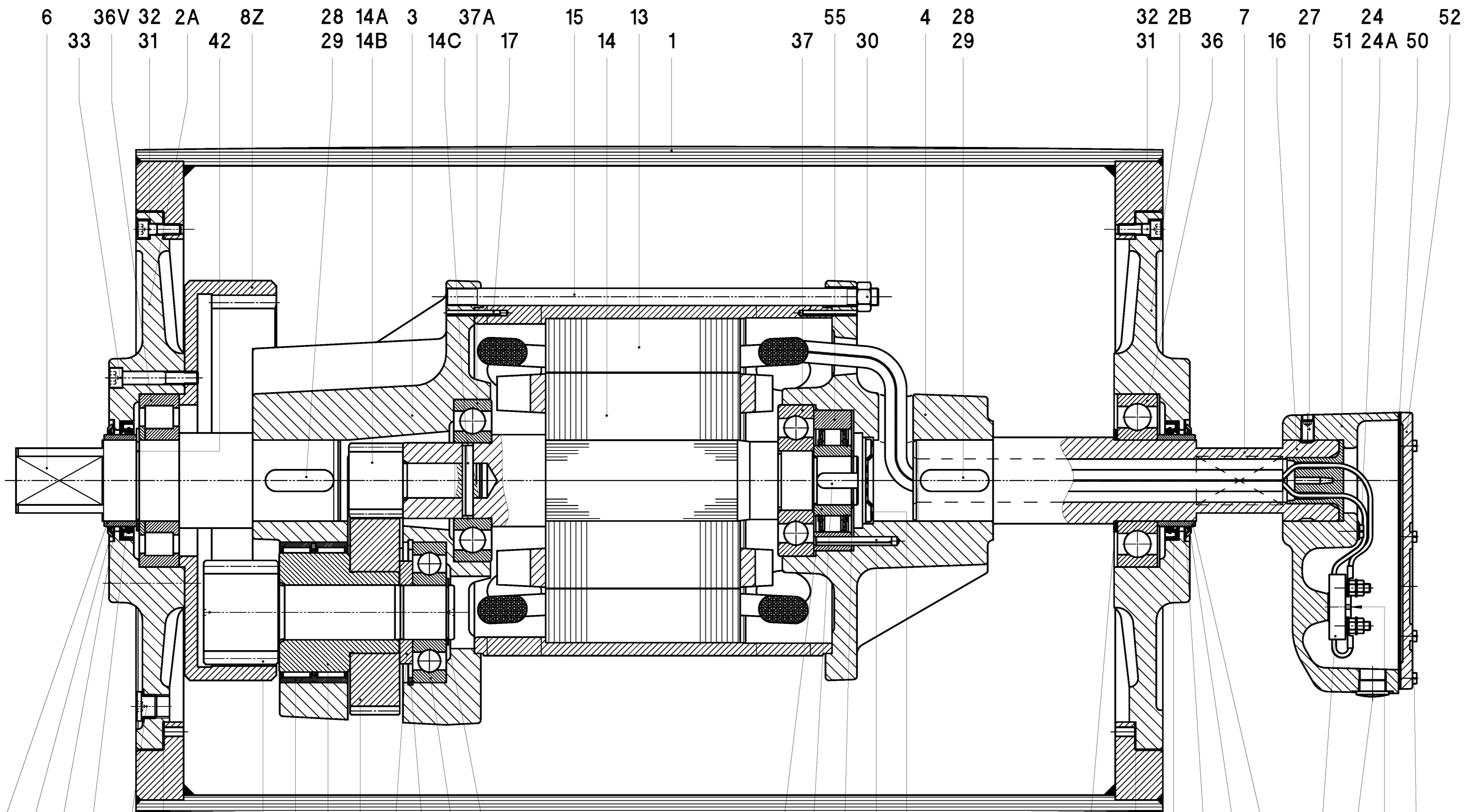
22-07-99



VAN DER GRAAF B.V.

VOLLENHOVE-HOLLAND

Telephone ++31(0)527-244441
Telefax ++31(0)527-24488



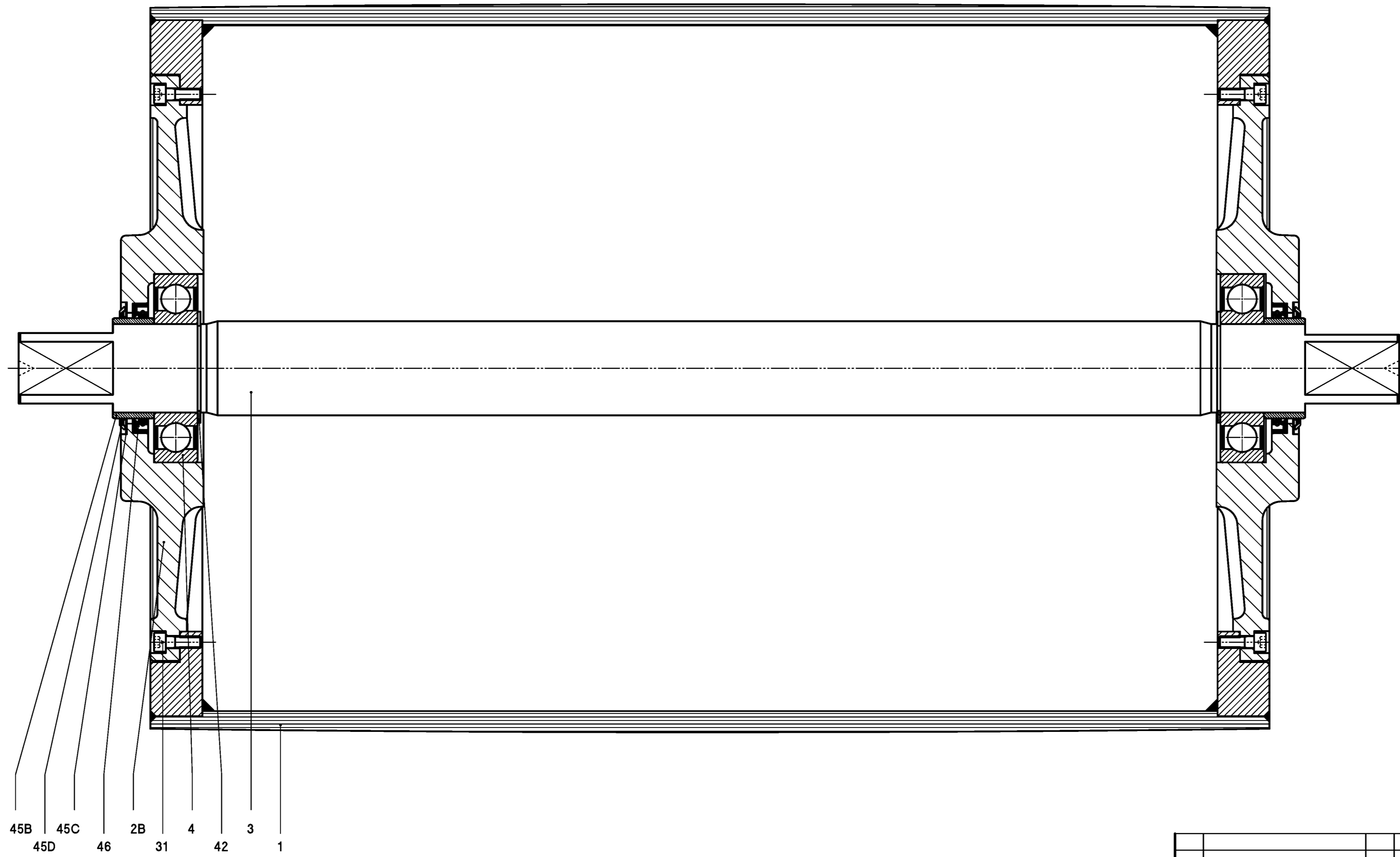
6 36V 32 2A 8Z 28 14A 3 37A 15 13 55 4 28 32 2B 7 27 24 52
 33 31 42 29 14B 14C 17 14 1 37 30 29 31 36 16 51 24A 50

45A 45C 34 9 10 12 38 55 58 41 18 45C 45B 53 23
 45D 46 35 18 39 11 44 43 54 59 47 46 45D 20 20A

- | | | | | |
|-------------------|----------------------|-----------------------|-------------------|----------------------|
| 1 Shell | 14 Rotor | 27 Setscrew | 37 A Ballbearing | 47 Shim |
| 2 A Endflange | 14 A/B Insert pinion | 28 Setscrew | 38 Ballbearing | 50 Seal |
| 2 B Endflange | 14C Spiral pin | 29 Key | 39 Needlebearing | 51 Junctionbox |
| 3 Gearinghousing | 15 Threaded Rod | 30 Nut | 41 Locking disc | 52 Junctionbox cover |
| 4 Motorflange | 16 Cable passage | 31 Int. Hex screw | 42 Circlip | 53 Blindstop |
| 6 Shaftend | 17 Spiral pin | 32 Bonded seal | 43 Circlip | 54 Key |
| 7 Hollow Shaft | 18 Gasket | 33 Int. Hex screw | 44 Circlip | 55 Backstop |
| 8 Z Internal gear | 20 Terminalboard | 34 Fillerplug | 45 A Bearing race | 57 Dataplate |
| 9/10 Pinion | 20 A Cyl. Head screw | 35 Washer | 45 B Bearing race | 58 Circlip |
| 11 Gear | 23 Star washer | 36 Ballbearing | 45 C Shim plated | 59 Spiral pin |
| 12 Distance ring | 24 Star washer | 36 V Cylinder bearing | 45 D Gammaring | |
| 13 Stator | 24 A Star washer | 37 Ballbearing | 46 Oilseal | |

~ onbewerkt v ruw bewerkt vv glad bewerkt vvv fijn bewerkt wv geslepen wvv gehoord wvv gekoet		Amerikaanse Projectie MAATTOLERANTIES VOLGENS NEN 2365
Schaal: 1 : 2	Datum	
Getekend: H.d.D.	18-10-04	
Gez.: _____	Gezien: _____	
Wijz. Omschrijving	Dat. Par.	B.V. BS:
Benaming DRUMMOTOR		
Formaat A1		Tekeningnr. TM620A75_00_Z
VAN DER GRAAF B.V. VOLLENHOVE (+31(0)527-241441) HOLLAND		

Deze tekening is eigendom van VAN DER GRAAF B.V. Inzake vervalsing, verspreiding en openbaarmaking aan derden is strafbaar.



- | | | | |
|-----|----------------|------|--------------|
| 1 | Shell | 42 | Circlip |
| 2 B | Endflange | 45 | Bearing race |
| 3 | Shaft | 45 C | Shim plated |
| 4 | Ballbearing | 45 D | Gammaring |
| 31 | Int. Hex screw | 46 | Oilseal |

		~ onbewerkt	Amerikaanse		
		v ruw bewerkt	Projectie		
		vv glad bewerkt	MAATTOEGANGS VOLGENS NEN 2365		
		vvv fijn bewerkt	Schaal: 1 : 2		Datum
		vvv geslepen	Getekend: H.d.D.		18-10-04
		vvv gehoord	Gez.: BS:		
		vvv gekapt			
Wijz. Omschrijving	Dat. Par.	B.V.	BS:		
Materiaal:		Benaming: DRUMMOTOR			
VAN DER GRAAF B.V. VOLLENHOVE (+31(0)527-241441) HOLLAND		Formaat: A1	Tekeningnr.: KT620A75_00		
<small>Deze tekening is eigendom van VAN DER GRAAF B.V. Inzake vermen- ings, verspreiding en openbaarmaking aan derden is strafbaar.</small>					