

# TM 315.50



*Van der Graaf Scandinavia*

POWER TRANSMISSION EQUIPMENT

Van der Graaf Scandinavia AB • Box 54, Spinngatan 2 • 260 50 Billesholm  
Tfn 042-22 08 02 • Fax 042-22 08 03  
[www.vandergraaf.se](http://www.vandergraaf.se) • [info@vandergraaf.se](mailto:info@vandergraaf.se)

# TM 315.50

Type TM 315.50	Power kW	Beltspeed m/s at 50 Hz Beltpull N										Min. L mm Design		Full load Curr. 400 V - 50 Hz I = ....A	Weight kg L=600		
		A	B	A	B	A	B	A	B	A	B	A	B				
410	7,5	4,1	3,4	3	2,4	2,2	1,9	1,7	1,5					600	650	15	140
410 ZV		1740	2095	2375	2970	3240	3750	4190	4750								
		1,4	1,25	1,2	1,1												
		5090	5700	5940	6475												
475	5,5	4,1	3,4	3	2,4	2,2	1,9	1,7	1,5					550	600	10,5	135
475 Z		1275	1535	1740	2175	2375	2750	3075	3485								
		1,4	1,25	1,2	1,1												
475 ZV		3730	4180	4355	4750												
		0,95	0,8														
		5500	6530														
455	4	4,1	3,4	3	2,4	2,3	1,9	1,7	1,5	1,4	1,2	1,1	0,9	500	550	7,8	130
455 Z		925	1120	1265	1585	1650	2000	2235	2535	2715	3165	3455	4220				
		0,8															
		4750															
455 ZV		0,7	0,65	0,6	0,55												
		5430	5845	6335	6910												
440	3	2,3	1,9	1,7	1,5	1,4	1,2	1,1	0,9	0,8				500	550	6,6	130
440 Z		1240	1500	1675	1900	2035	2375	2590	3165	3565							
		0,7	0,6														
440 ZV		4070	4750														
		0,55	0,5														
		5180	5700														
640	3	2,7	1,6											500	550	7,1	130
640 ZV		1055	1780														
		0,45	0,4														
		6335	7125														
630	2,2	1,5	1,2	1,1	0,9	0,8	0,7	0,6	0,5					500	550	4,9	130
630 Z		1395	1740	1900	2320	2615	2985	3485	4180								
		0,45															
630 ZV		4645															
		0,4	0,38	0,34													
		5225	5500	6145													
820	1,5	1,1	0,9	0,85	0,65	0,6	0,55	0,45	0,4					500	550	4,6	130
820 Z		1295	1585	1675	2190	2375	2590	3165	3565								
		0,37	0,32	0,29													
820 ZV		3850	4455	4915													
		0,25															
		5700															
1220	1,5	0,7	0,35											550	600	5,8	135
1220 ZV		2035	4070														
		0,24	0,21														
		5940	6785														
815	1,1	1,1	0,9	0,85	0,65	0,6	0,55	0,45	0,4					500	550	3,3	130
815 Z		950	1160	1230	1610	1740	1900	2320	2615								
		0,37	0,32	0,29	0,25												
		2825	3265	3605	4180												
1215	1,1	0,7	0,35											500	550	5,9	130
1215 Z		1495	2985														
		0,24															
1215 ZV		4355															
		0,19	0,16														
		5500	6530														

Available standard facewidth's **500 - 550 - 600 - 650 - 700 - 750 - 800 - 850 - 900 - 950 - 1000 - 1050 - 1100 - 1150 mm**

The total weight of a drummotor grows approx. 7.0 kg per 100 mm.

Two speed drummotors upon request

Other beltspeeds and facewidth's upon request.

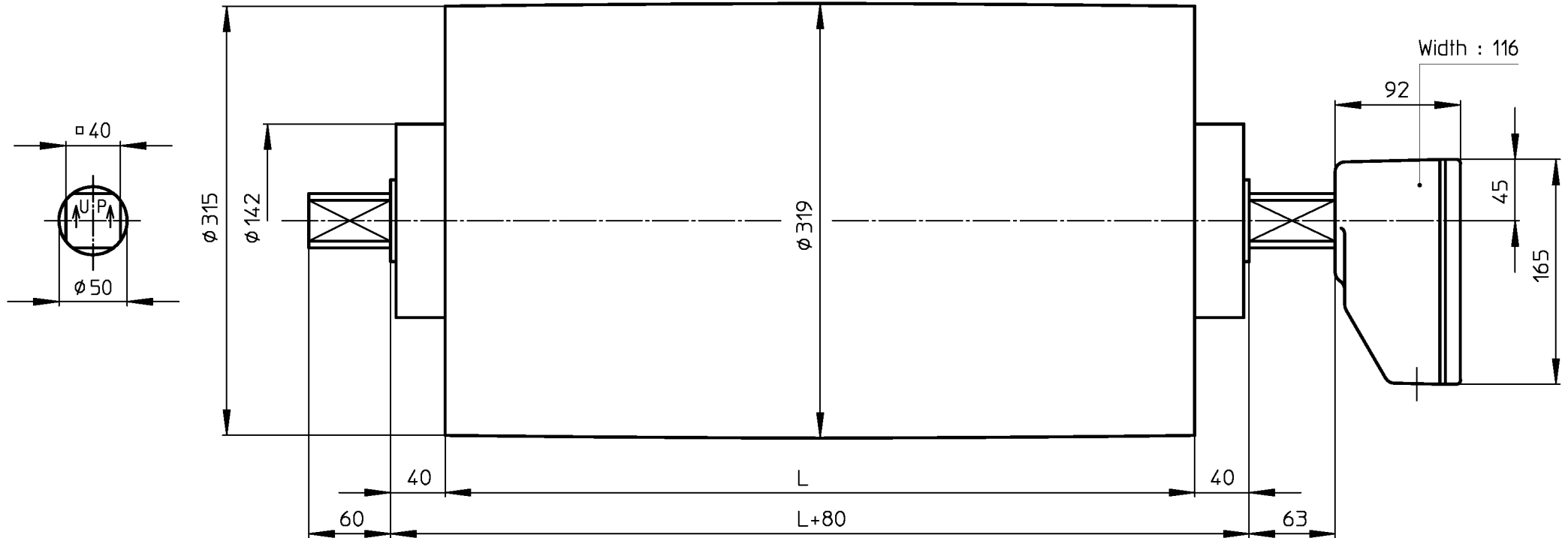
When an electro-mechanical brake is fitted, the minimum facewidth is increased by 150 mm

All these drummotors are also available in Stainless Steel - 316

Available torque  $\frac{\text{Beltpull N} \times \text{Drum diameter m}}{2}$  (Nm)

# TM315A50

Design A



MS\_TM315A50\_KKGG

28-10-2002



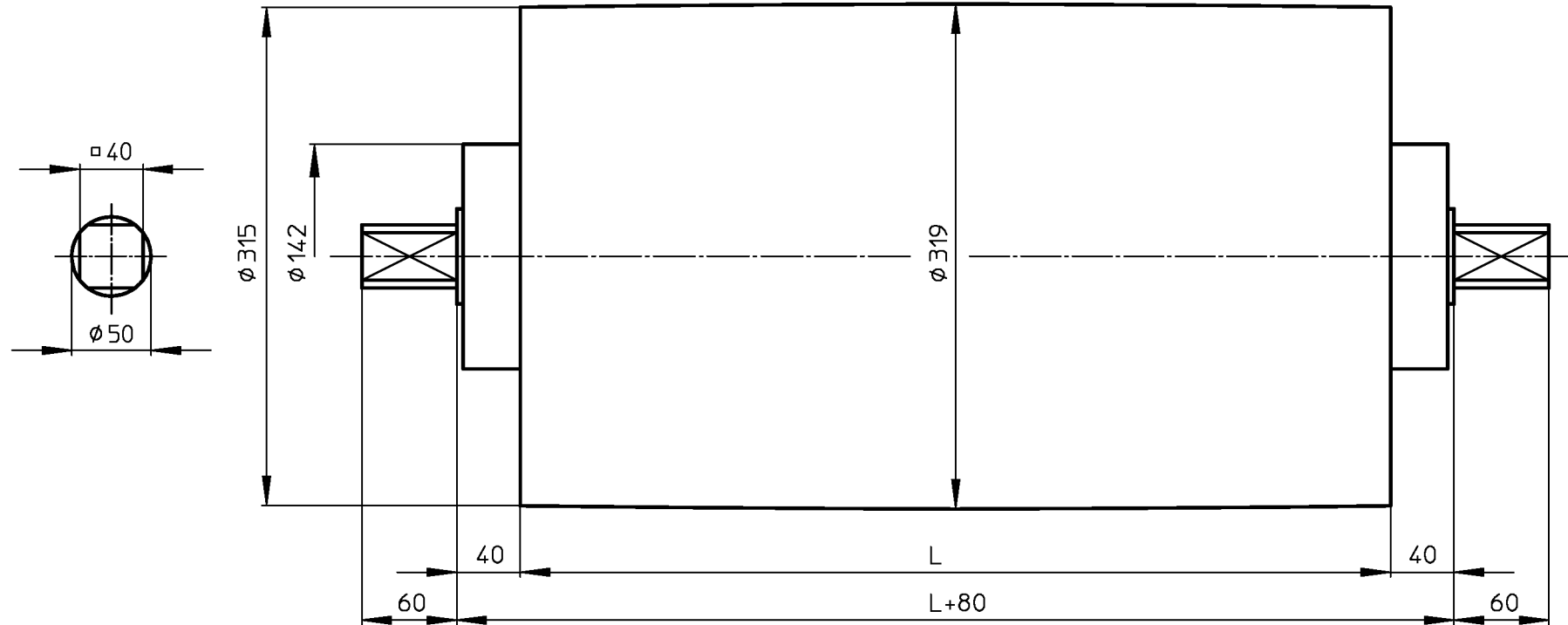
**VAN DER GRAAF B.V.**

VOLLENHOVE-HOLLAND

Telephone :+31(0)527-241441  
Telefax :+31(0)527-241488

# KT315A50

Design A



MS\_KT315A50

28-10-2002

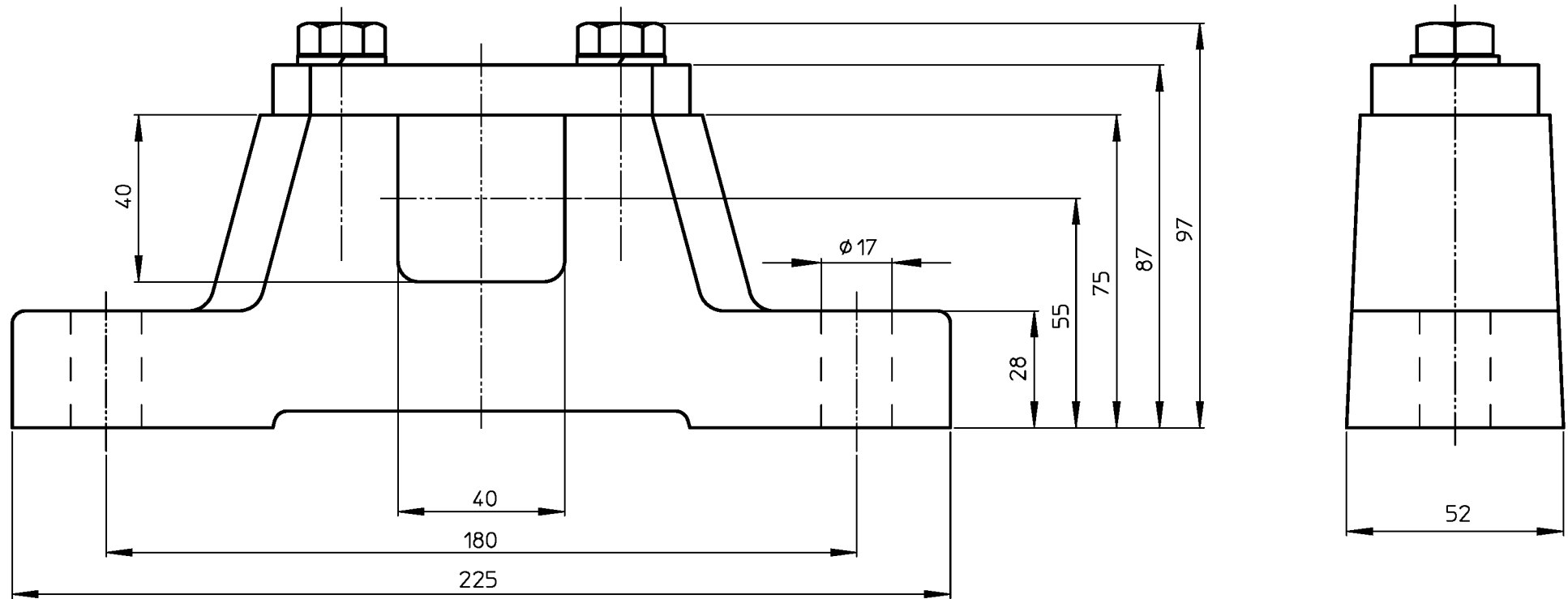


**VAN DER GRAAF B.V.**

VOLLENHOVE-HOLLAND

Telephone :+31(0)527-241441  
Telefax :+31(0)527-241488

# ASBLOK/BRACKET/LAGERBOCK AB50



MS\_AB50

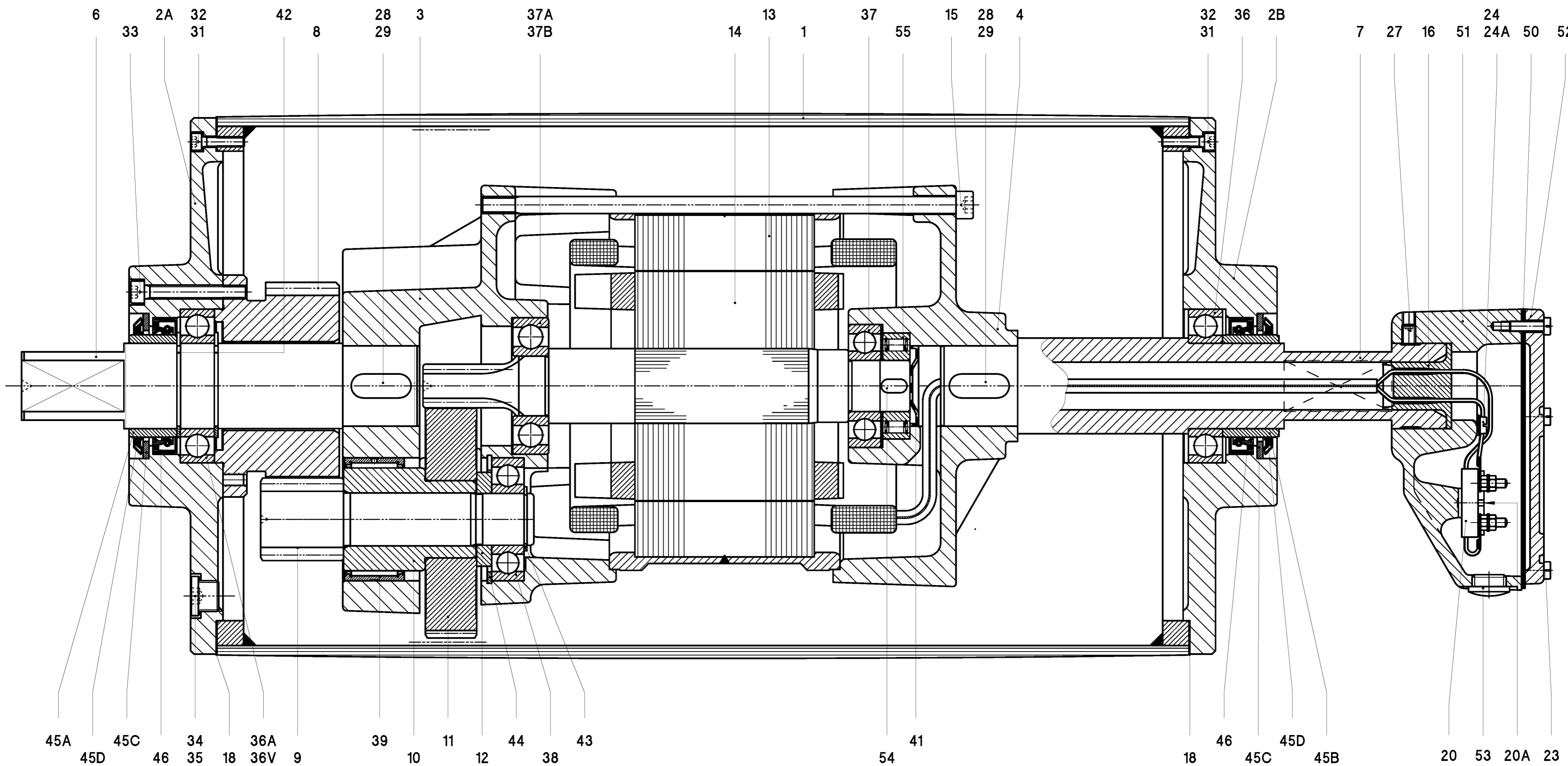
22-07-99



VAN DER GRAAF B.V.

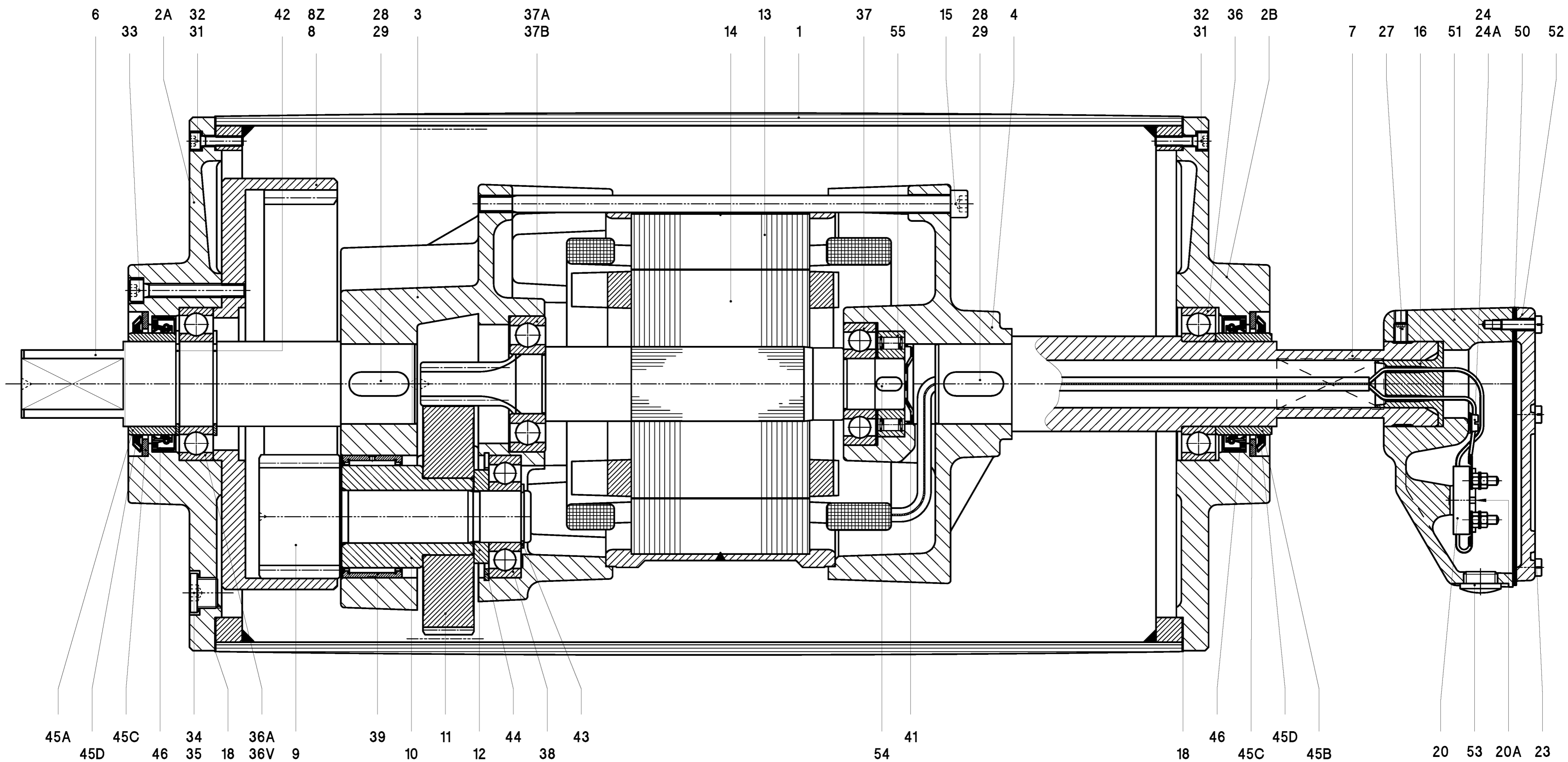
VOLLENHOVE-HOLLAND

Telephone ++31(0)527-24441  
Telefax ++31(0)527-24488



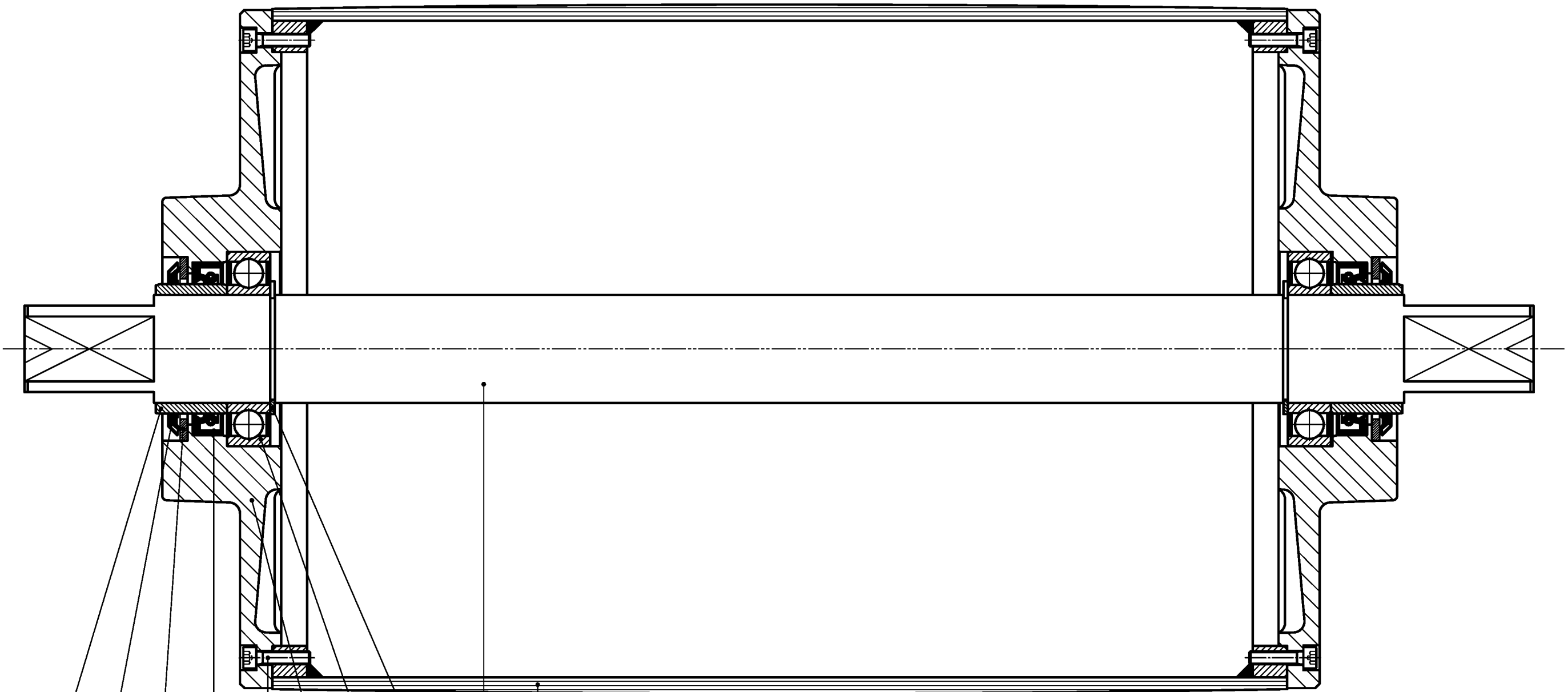
- |                         |                      |                   |                    |                      |
|-------------------------|----------------------|-------------------|--------------------|----------------------|
| 1 Shell                 | 12 Distance ring     | 24 A Star washer  | 37 Ballbearing     | 45 C Shim plated     |
| 2 A Endflange           | 13 Stator            | 27 Setscrew       | 37 A/B Ballbearing | 45 D Gammaring       |
| 2 B Endflange           | 14 Rotor             | 28 Setscrew       | 38 Ballbearing     | 46 Oilseal           |
| 3 Gearinghousing        | 15 Int. Hex screw    | 29 Key            | 39 Needlebearing   | 50 Seal              |
| 4 Motorflange           | 16 Cable passage     | 31 Int. Hex screw | 41 Locking disc    | 51 Junctionbox       |
| 6 Shaftend              | 18 Gasket            | 32 Bonded seal    | 42 Circlip         | 52 Junctionbox cover |
| 7 Hollow Shaft          | 20 Terminalboard     | 33 Int. Hex screw | 43 Circlip         | 53 Blindstop         |
| 8 Internal gear         | 20 A Cyl. Head screw | 34 Fillerplug     | 44 Circlip         | 54 Key               |
| 9 / 10 Pinion with bush | 23 Cyl. Head screw   | 35 Washer         | 45 A Bearing race  | 55 Backstop          |
| 11 Gear                 | 24 Cyl. Head screw   | 36 Ballbearing    | 45 B Bearing race  | 57 Dataplate         |

Wijz. Omschrijving		Dat. Par. B.V. BS:	
Materiaal		Benaming	
		<b>DRUMMOTOR</b>	
<b>VAN DER GRAAF B.V.</b> VOLLENHOVE (+31(0)527-241441) HOLLAND		Formaat Tekeningsnr. <b>A1 TM315A50_00</b>	
<small>Deze tekening is eigendom van VAN DER GRAAF B.V. iedere verveem-          ding, verspreiding en openbaarmaking aan derden is strafbaar.</small>			



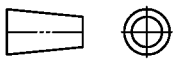

- |                                |                             |                              |                           |                             |
|--------------------------------|-----------------------------|------------------------------|---------------------------|-----------------------------|
| <b>1</b> Shell                 | <b>12</b> Distance ring     | <b>27</b> Setscrew           | <b>37</b> Ballbearing     | <b>45 C</b> Shim plated     |
| <b>2 A</b> Endflange           | <b>13</b> Stator            | <b>28</b> Setscrew           | <b>37 A/B</b> Ballbearing | <b>45 D</b> Gammaring       |
| <b>2 B</b> Endflange           | <b>14</b> Rotor             | <b>29</b> Key                | <b>38</b> Needlebearing   | <b>46</b> Oilseal           |
| <b>3</b> Gearinghousing        | <b>15</b> Int. Hex screw    | <b>31</b> Int. Hex screw     | <b>39</b> Locking disc    | <b>50</b> Seal              |
| <b>4</b> Motorflange           | <b>16</b> Cable passage     | <b>32</b> Bonded seal        | <b>41</b> Circlip         | <b>51</b> Junctionbox       |
| <b>6</b> Shaftend              | <b>18</b> Gasket            | <b>33</b> Int. Hex screw     | <b>42</b> Circlip         | <b>52</b> Junctionbox cover |
| <b>7</b> Hollow Shaft          | <b>20</b> Terminalboard     | <b>34</b> Fillerplug         | <b>43</b> Circlip         | <b>53</b> Blindstop         |
| <b>8 Z</b> Internal gear       | <b>20 A</b> Cyl. Head screw | <b>35</b> Washer             | <b>44</b> Bearing race    | <b>54</b> Key               |
| <b>9 / 10</b> Pinion with bush | <b>23</b> Cyl. Head screw   | <b>36</b> Ballbearing        | <b>45 A</b> Bearing race  | <b>55</b> Backstop          |
| <b>11</b> Gear                 | <b>24</b> Cyl. Head screw   | <b>36 V</b> Cylinder bearing | <b>45 B</b>               | <b>57</b> Dataplate         |
|                                | <b>24 A</b> Star washer     |                              |                           |                             |

		<small>~ onbewerkt v ruw bewerkt vv glad bewerkt vvv fijn bewerkt vvv geslepen vvv gepolijst vvv gelapt</small>		Amerikaanse Projectie	
		Schaal: 1 : 1,25		Datum 23-08-01	
		Getekend: S.Z.		Gezien: J.K.	
		Wijz. Omschrijving		Dat. Par. B.V. BS:	
Materiaal:		Benaming: <b>DRUMMOTOR</b>			
<b>VAN DER GRAAF B.V.</b> VOLLENHOVE (+31(0)527-241441) HOLLAND		Formaat: <b>A1</b>		Tekeningnr.: <b>TM315A50_00_Z</b>	
<small>Deze tekening is eigendom van VAN DER GRAAF B.V. iedere verveem- ding, verspreiding en openbaarmaking aan derden is strafbaar.</small>					



45B 45C 31 4 42 3  
 45D 46 2B 42 1

- |     |                |      |              |
|-----|----------------|------|--------------|
| 1   | Shell          | 42   | Circlip      |
| 2 B | Endflange      | 45   | Bearing race |
| 3   | Shaft          | 45 C | Shim plated  |
| 4   | Ballbearing    | 45 D | Gammaring    |
| 31  | Int. Hex screw | 46   | Oilseal      |

~ onbewerkt ▽ ruw bewerkt ▽▽ glad bewerkt ▽▽▽ fijn bewerkt ▽▽▽ geslepen ▽▽▽ gehoond ▽▽▽ gelapt		Amerikaanse Projectie  MAATTOLERANTIES VOLGENS NEN 2365
Schaal: 1 : 2		Datum
Getekend: S.Z.		11-08-97
Gec.:		Gezien: 11-10-02
Wijz.	Omschrijving	Dat. Par. B.V. BS:
Materiaal:		Benaming: <b>KEERTROMMEL</b>
 <b>VAN DER GRAAF B.V.</b> VOLLENHOVE (+31(0)527-241441) HOLLAND		Formaat <b>A3</b> Tekeningsnr. <b>KT315A50_00</b>
<small>Deze tekening is eigendom van VAN DER GRAAF B.V. Iedere verveemding, vernetigvuldiging en openbaarmaking aan derden is strafbaar.</small>		