

TM 215.40



Van der Graaf Scandinavia

POWER TRANSMISSION EQUIPMENT

Van der Graaf Scandinavia AB • Box 54, Spinngatan 2 • 260 50 Billesholm
Tfn 042-22 08 02 • Fax 042-22 08 03
www.vandergraaf.se • info@vandergraaf.se

TM 215.40

| Type TM 215.40 | Power kW | Beltspeed m/s at 50 Hz | | | | | | | | | | Min. L mm Design | | Full load Curr. 400 V - 50 Hz I = ...A | Weight kg L=500 |
|-------------------|-------------|------------------------|------|------|------|------|------|------|------|------|------|---------------------|-----|--|-----------------------|
| | | Beltpull N | | | | | | | | | | A | B | | |
| 255 | 4 | 4,7 | 3,9 | 3,5 | 2,8 | 2,5 | | | | | | 500 | 550 | 7,3 | 64 |
| 255 Z | | 810 | 975 | 1085 | 1355 | 1520 | | | | | | | | | |
| 255 ZV | | 2 | 1,7 | | | | | | | | | | | | |
| | | 1900 | 2235 | | | | | | | | | | | | |
| | | 1,5 | 1,4 | 1,3 | 1,1 | 1 | 0,9 | | | | | | | | |
| | | 2535 | 2715 | 2925 | 3455 | 3800 | 4220 | | | | | | | | |
| 440 | 3 | 2,9 | 2,4 | 2 | 1,8 | 1,4 | 1,25 | | | | | 500 | 550 | 6,6 | 64 |
| 440 ZV | | 985 | 1190 | 1425 | 1585 | 2035 | 2280 | | | | | | | | |
| | | 1 | 0,85 | 0,75 | 0,7 | 0,65 | | | | | | | | | |
| | | 2850 | 3355 | 3800 | 4070 | 4385 | | | | | | | | | |
| 430 | 2,2 | 2,9 | 2,4 | 2,1 | 1,7 | 1,4 | 1,25 | 1 | 0,9 | | | 425 | 500 | 4,7 | 61 |
| 430 ZV | | 720 | 870 | 995 | 1230 | 1495 | 1670 | 2090 | 2320 | | | | | | |
| | | 0,85 | 0,7 | 0,65 | 0,6 | 0,55 | 0,5 | 0,45 | | | | | | | |
| | | 2460 | 2985 | 3215 | 3485 | 3800 | 4180 | 4645 | | | | | | | |
| 420 | 1,5 | 2,9 | 2,4 | 2,1 | 1,7 | 1,4 | 1,25 | 1 | 0,9 | 0,8 | 0,7 | 425 | 500 | 3,6 | 59 |
| 420 ZV | | 490 | 595 | 680 | 840 | 1020 | 1140 | 1425 | 1585 | 1780 | 2035 | | | | |
| | | 0,6 | 0,55 | 0,5 | 0,45 | 0,4 | | | | | | | | | |
| | | 2375 | 2590 | 2850 | 3165 | 3565 | | | | | | | | | |
| 620 | 1,5 | 1,6 | 0,85 | | | | | | | | | 500 | 550 | 3,7 | 64 |
| 620 ZV | | 890 | 1675 | | | | | | | | | | | | |
| | | 0,36 | 0,34 | 0,31 | 0,28 | | | | | | | | | | |
| | | 3960 | 4190 | 4595 | 5090 | | | | | | | | | | |
| 415 | 1,1 | 2,9 | 2,4 | 2,1 | 1,8 | 1,4 | 1,25 | 1 | 0,9 | 0,8 | 0,7 | 425 | 500 | 2,9 | 57 |
| 415 Z | | 360 | 435 | 500 | 580 | 745 | 835 | 1045 | 1160 | 1305 | AKK | | | | |
| 415 ZV | | 0,6 | | | | | | | | | | | | | |
| | | 1740 | | | | | | | | | | | | | |
| | | 0,55 | 0,5 | 0,45 | | | | | | | | | | | |
| | | 1900 | 2090 | 2320 | | | | | | | | | | | |
| | | 0,4 | | | | | | | | | | | | | |
| | | 2615 | | | | | | | | | | | | | |
| 615 ZV | 1,1 | 0,36 | 0,34 | 0,31 | 0,28 | 0,26 | | | | | | 425 | 500 | 2,9 | 61 |
| | | 2905 | 3075 | 3370 | 3730 | 4020 | | | | | | | | | |
| 610 | 0,75 | 1,4 | 1,2 | 0,9 | 0,85 | 0,65 | 0,6 | 0,5 | 0,45 | 0,4 | | 425 | 500 | 2,5 | 59 |
| 610 Z | | 510 | 595 | 790 | 840 | 1095 | 1190 | 1425 | 1585 | 1780 | | | | | |
| 610 ZV | | 0,36 | 0,34 | 0,31 | | | | | | | | | | | |
| | | 1980 | 2095 | 2300 | | | | | | | | | | | |
| | | 0,28 | 0,26 | | | | | | | | | | | | |
| | | 2545 | 2740 | | | | | | | | | | | | |
| 810 ZV | 0,75 | 0,23 | 0,21 | 0,19 | | | | | | | | 425 | 500 | 2,7 | 61 |
| | | 3100 | 3395 | 3750 | | | | | | | | | | | |
| 675 | 0,55 | 1,4 | 1,2 | 0,9 | 0,85 | 0,65 | 0,6 | 0,5 | 0,45 | 0,4 | | 425 | 500 | 1,9 | 57 |
| 675 Z | | 375 | 435 | 580 | 615 | 805 | 870 | 1045 | 1160 | 1305 | | | | | |
| | | 0,36 | 0,34 | 0,31 | 0,28 | 0,26 | | | | | | | | | |
| | | 1450 | 1535 | 1685 | 1865 | 2010 | | | | | | | | | |
| 875 Z | 0,55 | 0,23 | | | | | | | | | | 425 | 500 | 2,2 | 59 |
| 875 ZV | | 2270 | | | | | | | | | | | | | |
| | | 0,21 | 0,19 | | | | | | | | | | | | |
| | | 2490 | 2750 | | | | | | | | | | | | |
| 1275 ZV | 0,55 | 0,17 | 0,15 | 0,12 | | | | | | | | 500 | 550 | 2,6 | 64 |
| | | 3075 | 3485 | 4355 | | | | | | | | | | | |
| 805 | 0,37 | 1,1 | 0,85 | 0,7 | 0,65 | 0,5 | 0,45 | 0,4 | 0,35 | 0,3 | | 425 | 500 | 1,8 | 57 |
| 805 Z | | 320 | 415 | 500 | 540 | 705 | 780 | 880 | 1005 | 1170 | | | | | |
| | | 0,28 | 0,25 | 0,23 | 0,21 | 0,19 | | | | | | | | | |
| | | 1255 | 1405 | 1530 | 1675 | 1850 | | | | | | | | | |
| 1205 | 0,37 | 0,55 | | | | | | | | | | 425 | 500 | 2 | 61 |
| 1205 Z | | 640 | | | | | | | | | | | | | |
| | | 0,17 | 0,15 | | | | | | | | | | | | |
| | | 2070 | 2345 | | | | | | | | | | | | |
| 1205 ZV | | 0,12 | | | | | | | | | | | | | |
| | | 2930 | | | | | | | | | | | | | |

Available standard facewidth's **425 - 450 - 500 - 550 - 600 - 650 - 700 - 750 - 800 - 850 - 900 - 950 - 1000 mm**

The total weight of a drummotor grows approx. 4,5 kg per 100 mm.

Two speed drummotors upon request

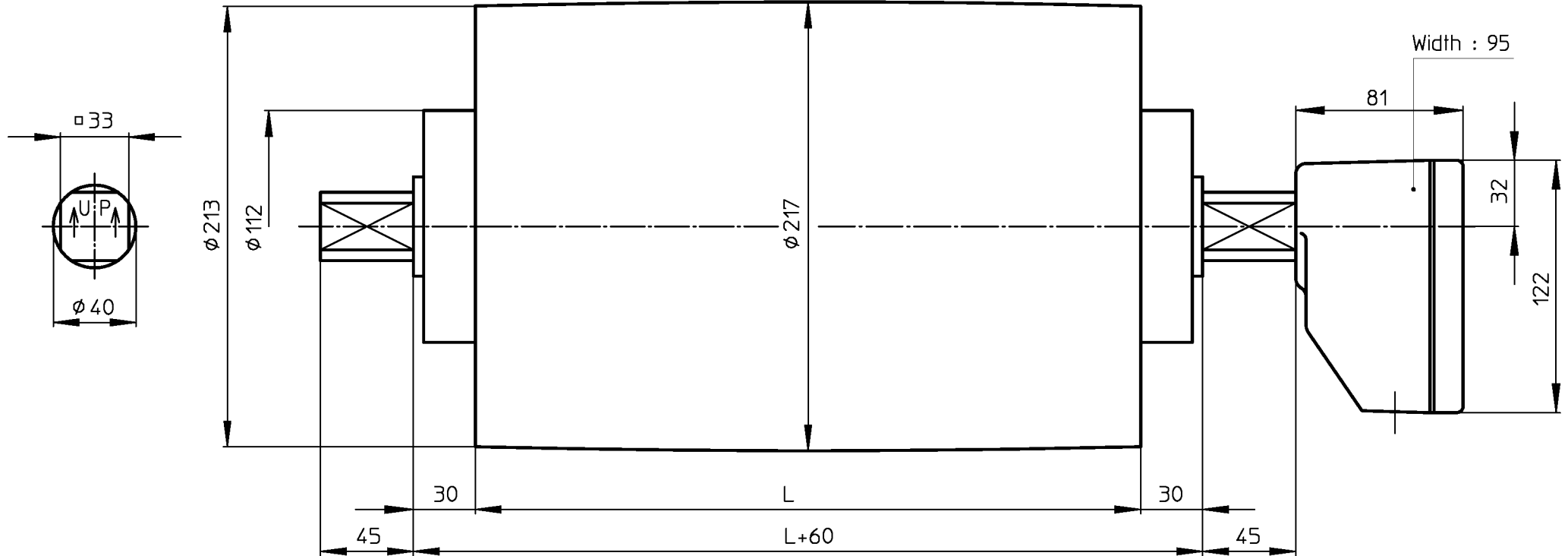
Other beltspeeds and facewidth's upon request.

When an electro-mechanical brake is fitted, the minimum facewidth is increased by 100 mm

All these drummotors are also available in Stainless Steel - 316

Available torque $\frac{\text{Beltpull N} \times \text{Drum diameter m}}{2}$ (Nm)

TM215A40
Design A



MS_TM215A40_KKGG

16-06-2004



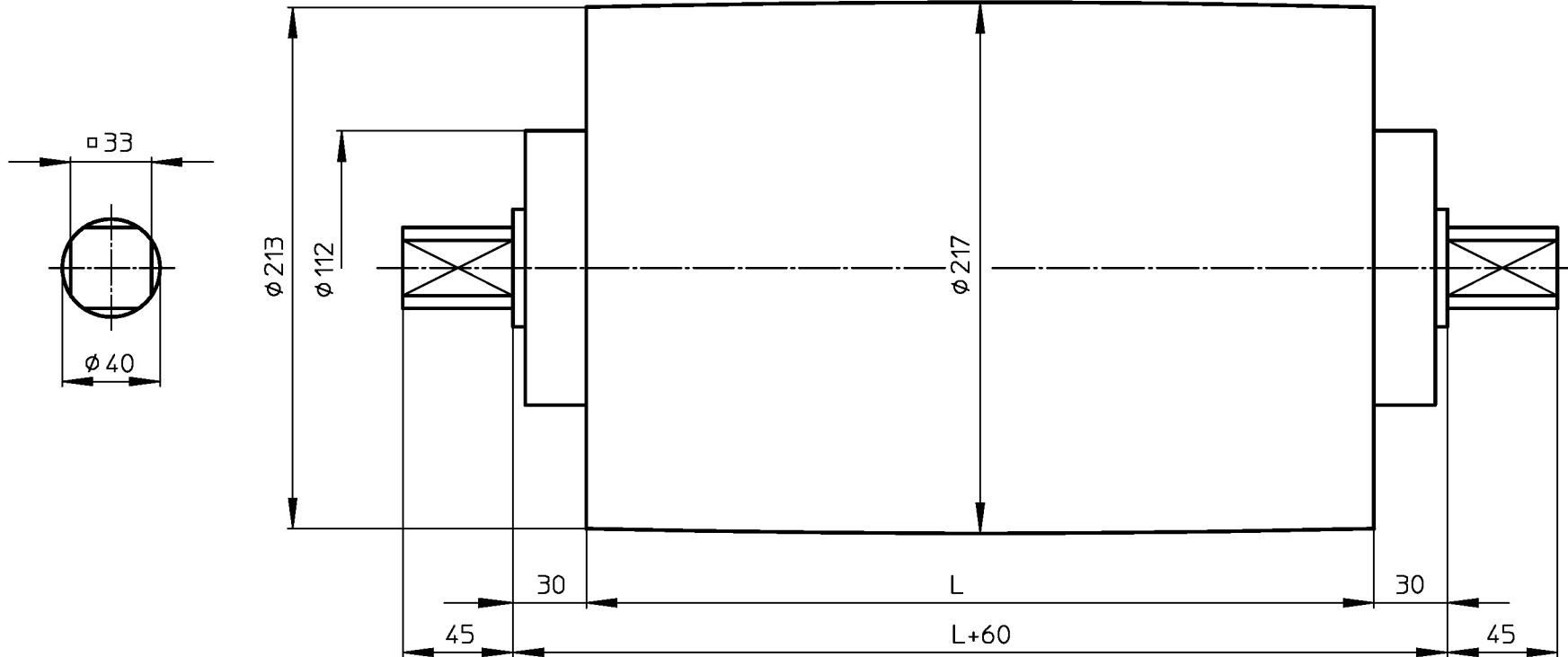
VAN DER GRAAF B.V.

VOLLENHOVE-HOLLAND

Telephone :+31(0)527-241441
Telefax :+31(0)527-241488

KT215A40

Design A



MS_KT215A40

06-09-2000

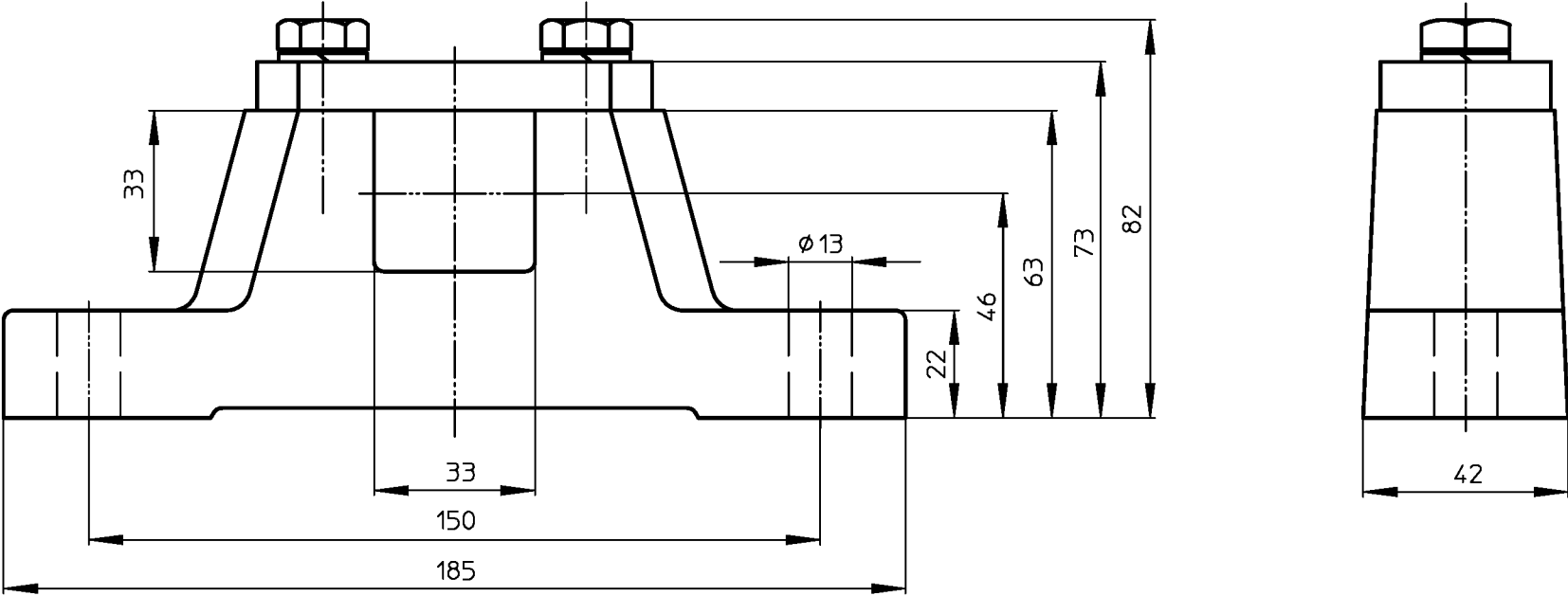


VAN DER GRAAF B.V.

VOLLENHOVE-HOLLAND

Telephone :+31(0)527-241441
Telefax :+31(0)527-241488

ASBLOK/BRACKET/LAGERBOCK AB40



MS_AB40

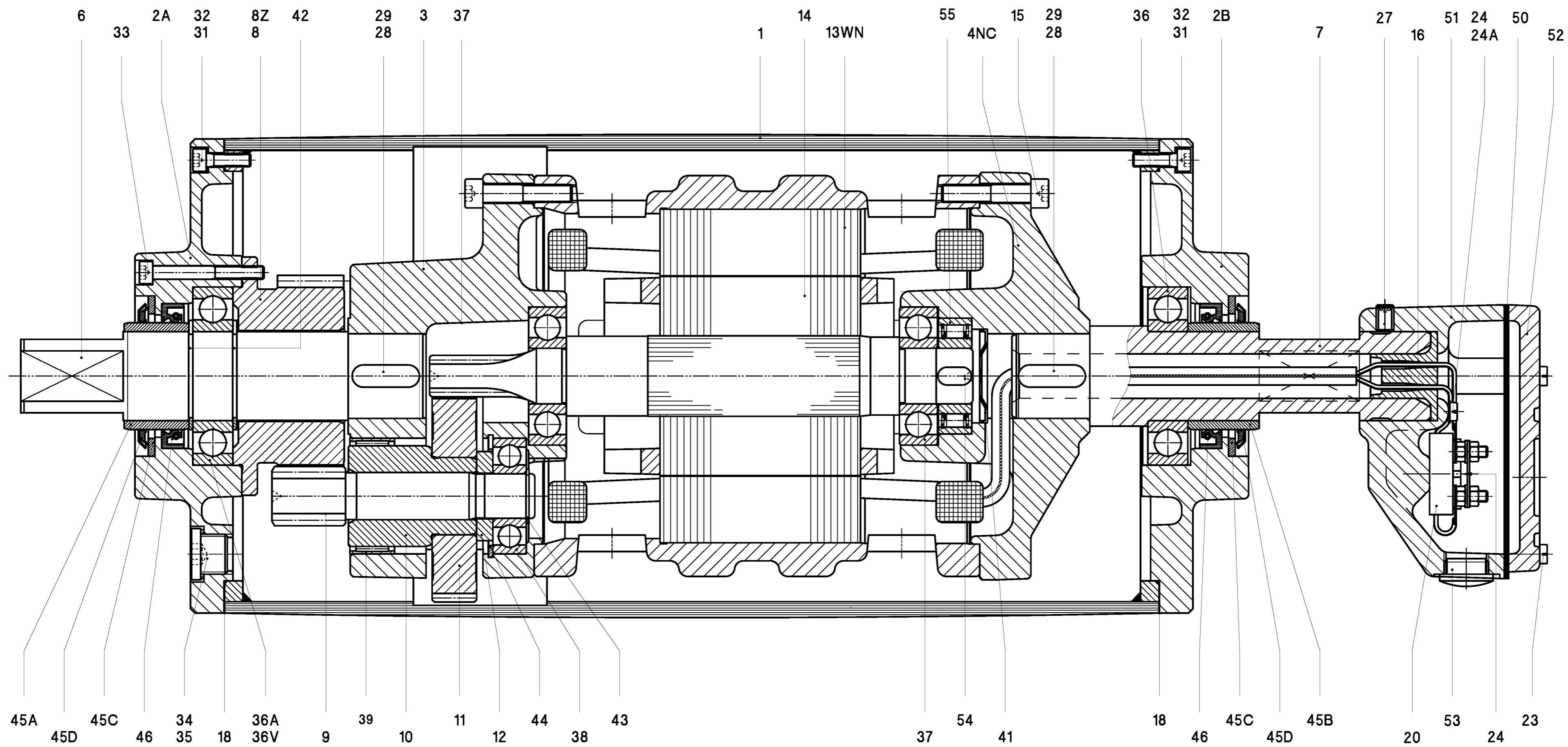
22-07-99



VAN DER GRAAF B.V.

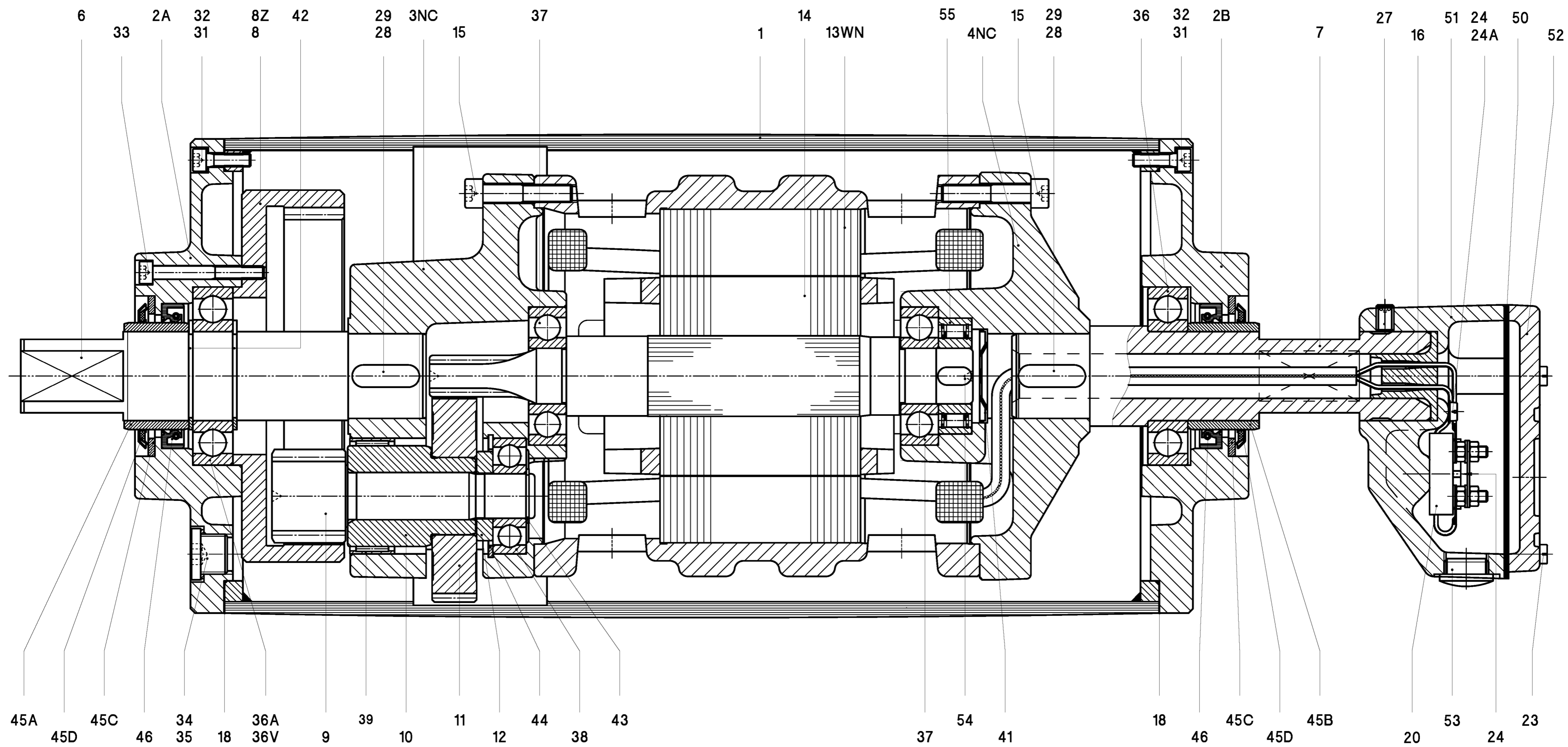
VOLLENHOVE-HOLLAND

Telephone ++31(0)527-24441
Telefax ++31(0)527-24488



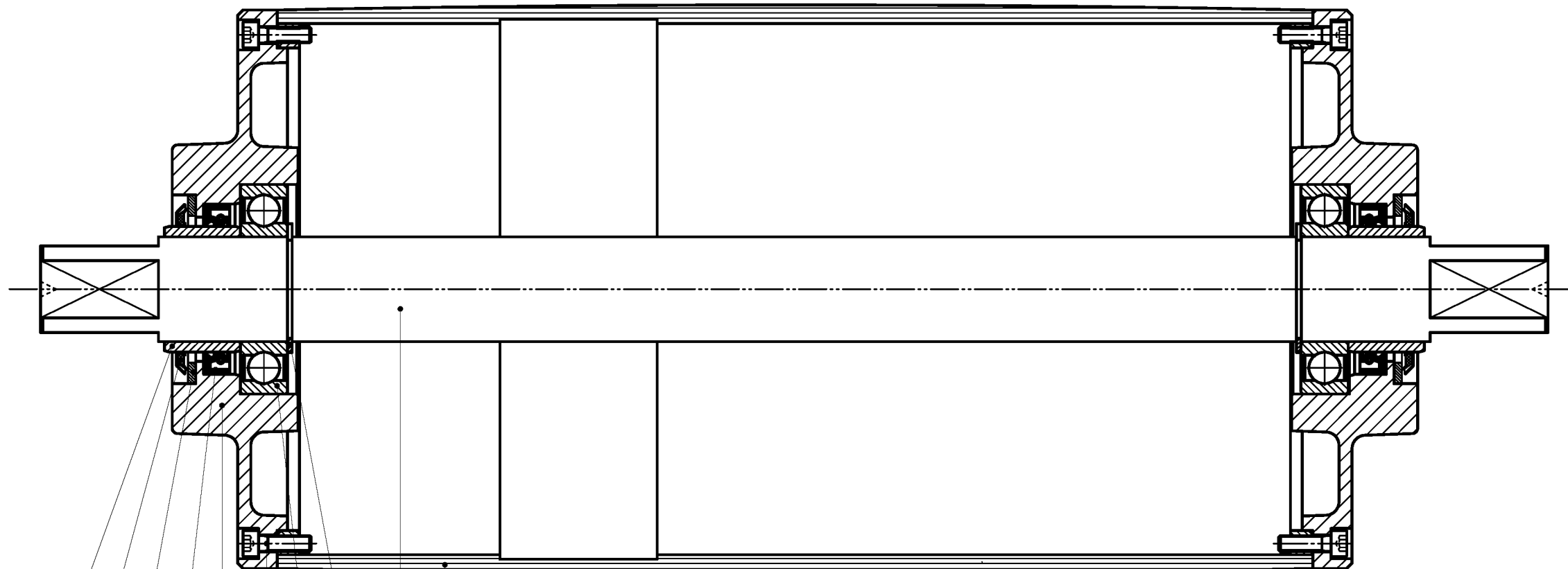
- | | | | | |
|--------------------------------|---------------------------|--------------------------|--------------------------|-----------------------------|
| 1 Shell | 12 Distance ring | 27 Setscrew | 38 Ballbearing | 45 D Gammaring |
| 2 A Endflange | 13 Stator | 28 Setscrew | 39 Needlebearing | 46 Oilseal |
| 2 B Endflange | 14 Rotor | 29 Key | 40 Shim | 50 Seal |
| 3 Gearinghousing | 15 Int. Hex screw | 31 Int. Hex screw | 41 Locking disc | 51 Junctionbox |
| 4 Motorflange | 16 Cable passage | 32 Bonded seal | 42 Circlip | 52 Junctionbox cover |
| 6 Shaftend | 18 Gasket | 33 Int. Hex screw | 43 Circlip | 53 Blindstop |
| 7 Hollow Shaft | 20 Terminalboard | 34 Fillerplug | 44 Circlip | 54 Key |
| 8 Internal gear | 23 Cyl. Head screw | 35 Washer | 45 A Bearing race | 55 Backstop |
| 9 / 10 Pinion with bush | 24 Cyl. Head screw | 36 Ballbearing | 45 B Bearing race | 57 Dataplate |
| 11 Gear | 24 A Star washer | 37 Ballbearing | 45 C Shim plated | |

| | | | | | |
|--|--|---|--|------------------------------------|--|
| | | ~ onbewerkt v ruw bewerkt vv glad bewerkt vvv fijn bewerkt vvvv geslepen vvvv gepolijst vvvv gelapt | | Amerikaanse Projectie | |
| | | Schaal: 1 : 1 | | Datum | |
| | | Getekend: H.d.D. | | 22-07-04 | |
| | | Gec.: | | Gezien: J.K. 08-10-04 | |
| Wijz. Omschrijving | | Dat. Par. | | B.V. BS: | |
| Materiaal: | | Benaming: DRUMMOTOR | | | |
| VAN DER GRAAF B.V. VOLLENHOVE (+31(0)527-241441) HOLLAND | | Formaat: A1 | | Tekeningnr.: TM215A40_00_NC | |
| <small>Deze tekening is eigendom van VAN DER GRAAF B.V. iedere verveem- ding, verspreiding en openbaarmaking aan derden is strafbaar.</small> | | | | | |



- | | | | | |
|-------------------------|--------------------|-----------------------|-------------------|----------------------|
| 1 Shell | 12 Distance ring | 27 Setscrew | 37 Ballbearing | 45 C Shim plated |
| 2 A Endflange | 13 Stator | 28 Setscrew | 38 Needlebearing | 45 D Gammaring |
| 2 B Endflange | 14 Rotor | 29 Key | 39 Needlebearing | 46 Oilseal |
| 3 Gearinghousing | 15 Int. Hex screw | 31 Int. Hex screw | 40 Shim | 50 Seal |
| 4 Motorflange | 16 Cable passage | 32 Bonded seal | 41 Locking disc | 51 Junctionbox |
| 6 Shaftend | 18 Gasket | 33 Int. Hex screw | 42 Circlip | 52 Junctionbox cover |
| 7 Hollow Shaft | 20 Terminalboard | 34 Fillerplug | 43 Circlip | 53 Blindstop |
| 8 Z Internal gear | 23 Cyl. Head screw | 35 Washer | 44 Circlip | 54 Key |
| 9 / 10 Pinion with bush | 24 Cyl. Head screw | 36 Ballbearing | 45 A Bearing race | 55 Backstop |
| 11 Gear | 24 A Star washer | 36 V Cylinder bearing | 45 B Bearing race | 57 Dataplate |

| | | | | | |
|--|--------------|---|--|--------------------------|-----|
| | | ~ onbewerkt v ruw bewerkt vv glad bewerkt vvv fijn bewerkt vvvv geslepen vvvv gepolijst vvvv gelapt | | Amerikaanse Projectie | |
| | | Schaal: 1 : 1 | | Datum | |
| | | Getekend: H.d.D. | | 21-07-04 | |
| | | Gecc.: | | Gezien: J.K. 08-10-04 | |
| Wijz. | Omschrijving | Dat. | Par. | B.V. | BS: |
| Materiaal: | | Benaming: | | | |
| | | DRUMMOTOR | | | |
| VAN DER GRAAF B.V. VOLLENHOVE (+31(0)527-241441) HOLLAND | | Formaat A1 | Tekeningnr. TM215A40_00_Z_NC | | |
| <small>Deze tekening is eigendom van VAN DER GRAAF B.V. Iedere verveem- ding, verspreiding en openbaarmaking aan derden is strafbaar.</small> | | | | | |



45B 45C 2B 4 3
45D 46 31 42 1

- | | | | |
|-----|----------------|------|--------------|
| 1 | Shell | 42 | Circlip |
| 2 B | Endflange | 45 | Bearing race |
| 3 | Shaft | 45 C | Shim plated |
| 4 | Ballbearing | 45 D | Gammaring |
| 31 | Int. Hex screw | 46 | Oilseal |

| | | | | | |
|---|--------------|--|-------------------|--|---|
| | | | | ~ onbewerkt ▽ ruw bewerkt ▽▽ glad bewerkt ▽▽▽ fijn bewerkt ▽▽▽ geslepen ▽▽▽ gehoond ▽▽▽ gelapt | Amerikaanse Projectie MAATTOLERANTIES VOLGENS NEN 2365 |
| | | | | Schaal: 1 : 2 | Datum |
| | | | | Getekend: S.Z. | 03-10-01 |
| | | | | Gec.: | Gezien: J.K. 07-10-04 |
| Wijz. | Omschrijving | Dat. | Par. | B.V. | BS: |
| | Materiaal: | Benaming: KEERTROMMEL | | | |
| | | VAN DER GRAAF B.V. VOLLENHOVE (+31(0)527-241441) HOLLAND | Formaat A3 | Tekeningnr. KT215A40_00 | |
| <small>Deze tekening is eigendom van VAN DER GRAAF B.V. Iedere vervorming, vermenigvuldiging en openbaarmaking aan derden is strafbaar.</small> | | | | | |